

**SUTARTINIAI ŽYMEJIMAI**

- +20 Kelio asinė linija ir piketai
- Sklypo riba
- Asfalto dangos kraštas
- Kelio bortas
- Vejos bortas
- Keliasišio riba
- Kelio ativaras
- Asfalto danga
- Betoninių trinkelų danga
- Granitinių trinkelų danga
- Neregulų vedimo sistema
- 70 Vertikalus kelio ženklas ir jo numeris
- Vertikalaus kelio ženklo pastatymo vieta ir kryptis
- Horizontalus žeklinimas, numeris ir parametrai

*Peržiūrėta 17 lapų*  
 Eismo saugumo skyriaus vedėjas  
 Nėmėnas Abukauskas  
 15.09.16

**KAUNAS 109 VILNIUS 139**  
 [A17] [A8] [E67] [A2] [E272]  
 [B04] [B04]  
 VILKS VAŽIUOJAMOSIOS DALIES

**KAUNAS 108 VILNIUS 138**  
 [A17] [E67] [E272]  
 [B18] [B04]  
 VILKS VAŽIUOJAMOSIOS DALIES

**RYGA / RIGA [A17] [A10] [E67]**  
 [B04] [B04]  
 VILKS VAŽIUOJAMOSIOS DALIES

**PANEVĖŽYS 6**  
 [B03] [B03]  
 VILKS VAŽIUOJAMOSIOS DALIES

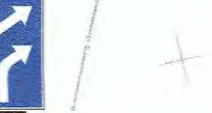
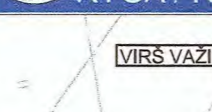
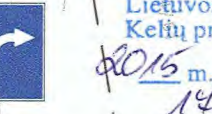
**PANEVĖŽYS 6**  
 [B03] [B03]  
 VILKS VAŽIUOJAMOSIOS DALIES

**ŠIAULIAI**  
 [A9] [E272] [B04]  
 [B04] [B04]  
 VILKS VAŽIUOJAMOSIOS DALIES

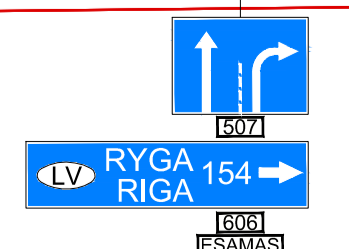
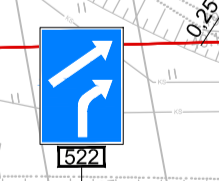
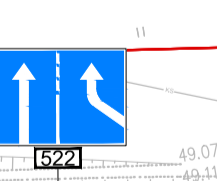
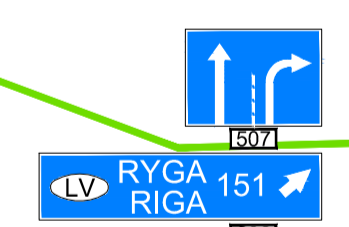
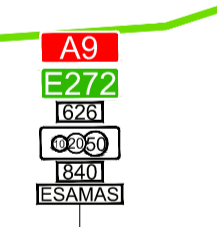
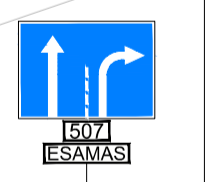
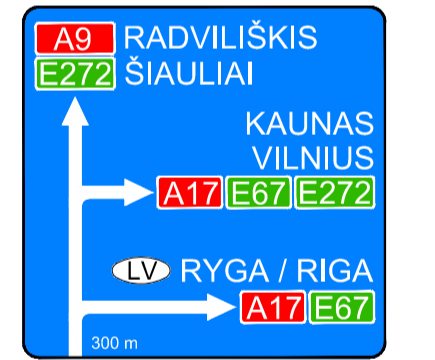
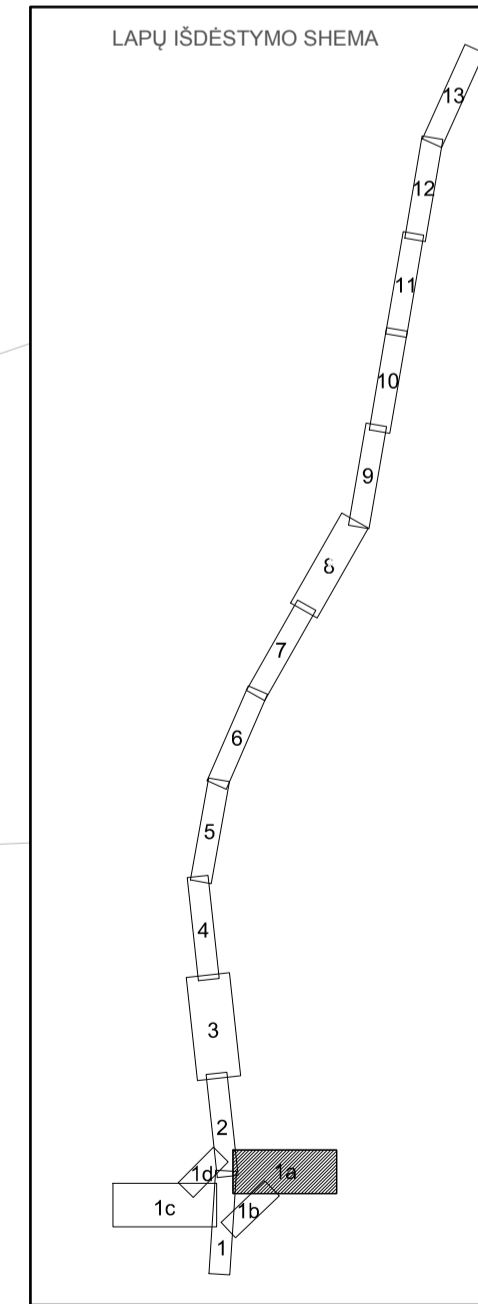
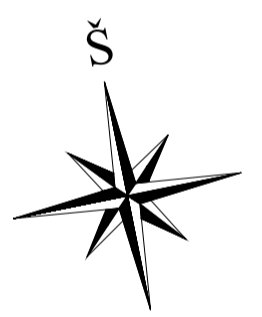
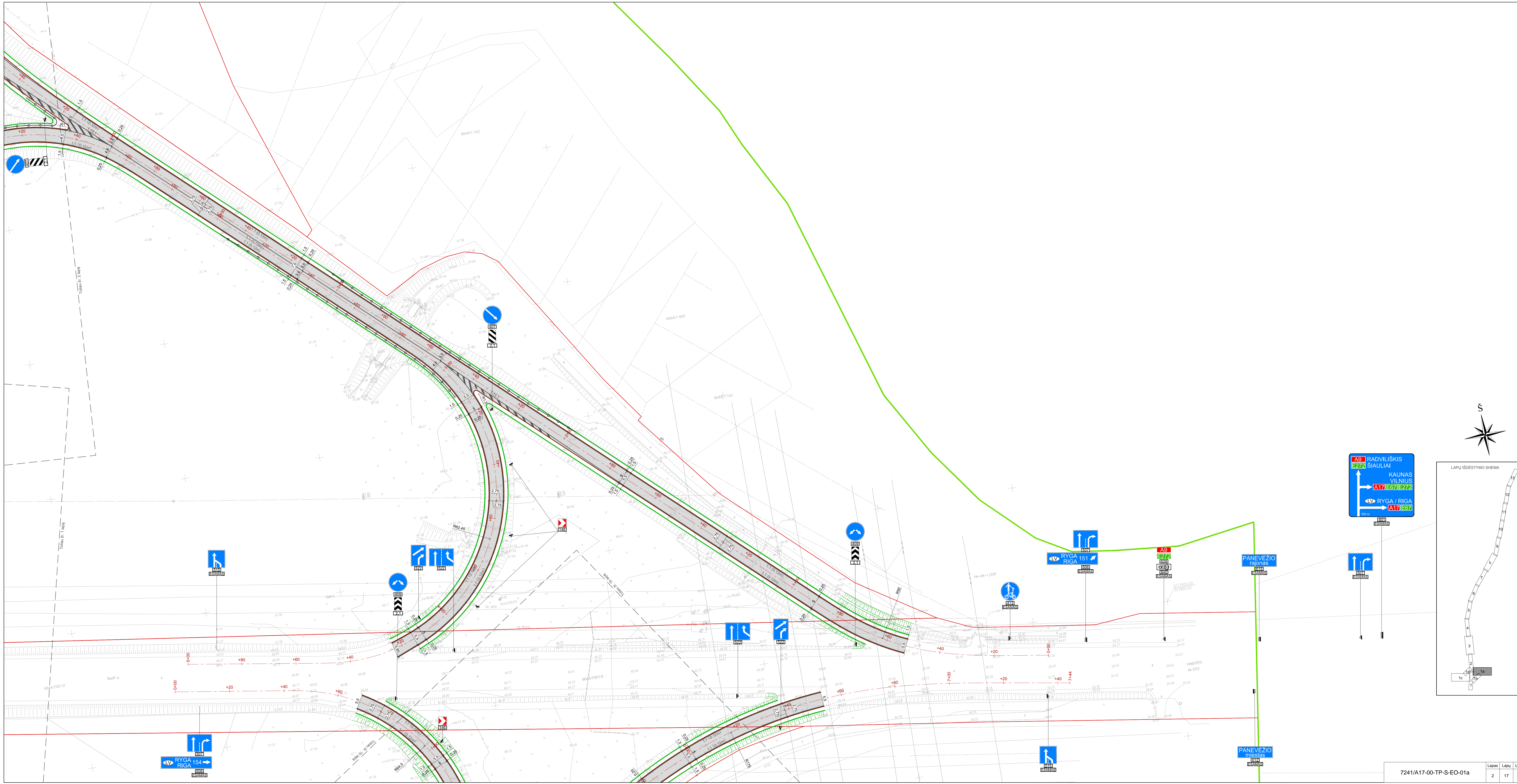
**PERŽIŪRĖTA: 166**  
 Lietuvos automobilių kelių direkcija  
 Kelių priežiūros skyrius  
 2015 m. 09 mėn. 15 d.  
 14 lapų  
 Kelių priežiūros skyriaus  
 vyr. inžinierius  
 Almantas Pajūrys

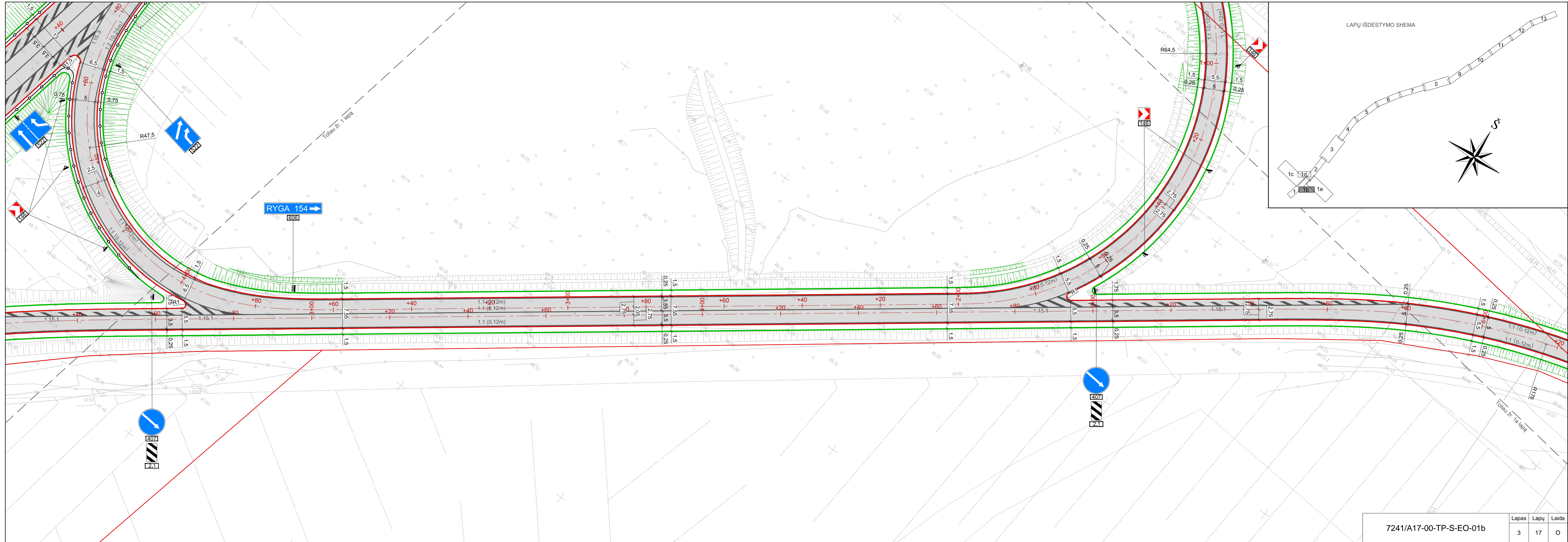
Atestato Nr. 3717 SPV		KELPROJEKTAS N. Apulskienė 2015.09.		VALSTYBINĖS REIKŠMĖS MAGISTRALINIS KELIAS A17 PANEVĖŽIO APLINKKELIS	
27987 SPDV		UAB TILTŲ EKSPERTŲ CENTRAS		Kelio rekonstravimas 0,00 - 22,06 km (II ruožas 10,53 - 22,06 km; I dalis 10,53 - 18,8 km)	
SPI		A. Indriūnas		Dangų ir eismo organizavimo planas M 1:500	
Etapas TP		LIETUVOS AUTOMOBILIŲ KELIŲ DIREKCIJA J. Basanavičiaus g. 36/2 LT-03109 Vilnius		Lapų Lapų 1 17	

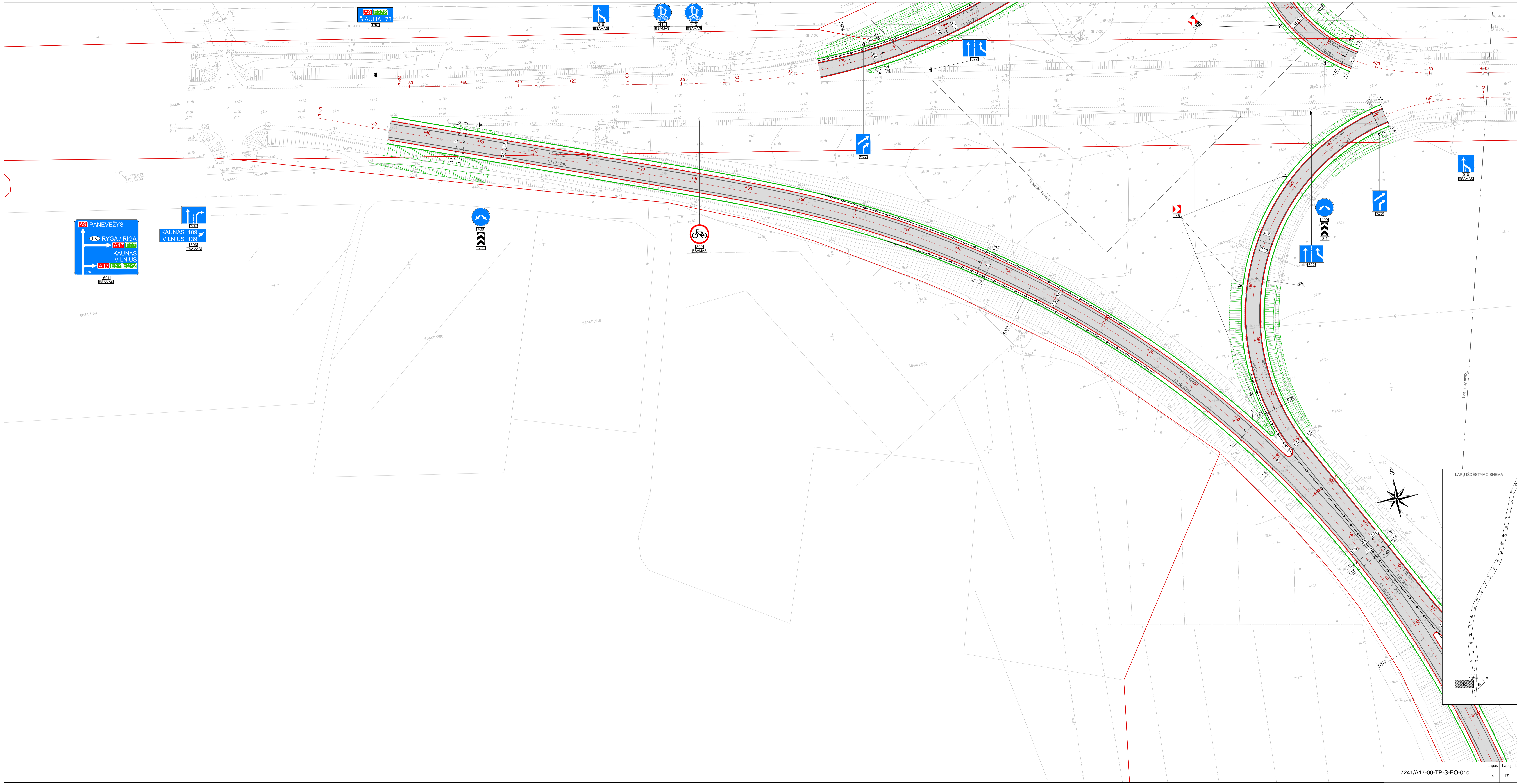
**[A17] [A10] RYGA RIGA**  
**[E67] RADVILIŠKIS ŠIAULIAI**  
**[A9] [E272] PANEVĖŽYS**  
**[B01] 300 m**  
 ŽENKLAS STATOMAS 300 M ATSTUMU IKI SANKRYŽOS



**[A17] [E67] [E272]**  
**KAUNAS 108 VILNIUS 138**  
 [B18]







**A9** PANEVĖŽYS  
 ↑  
 ↘ RYGA / RIGA  
 ↗ KAUNAS VILNIUS  
 A17 E67 E272  
 500 m  
 [E272] [E67] [A17]

[E272] [E67] [A17]  
 KAUNAS 109  
 VILNIUS 139  
 [E272] [E67] [A17]

**A9** E272  
 SIAULIAI 73  
 [E272]

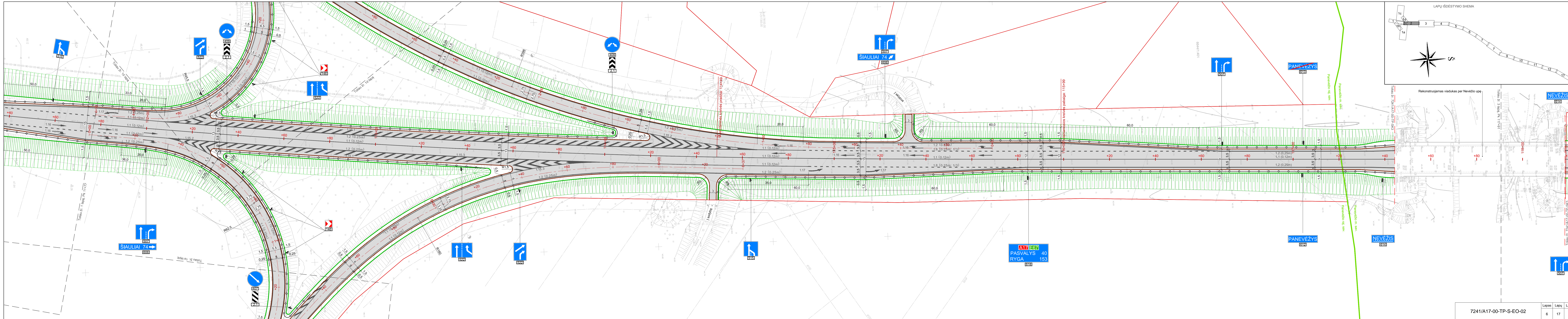
[E272] [E67] [A17]  
 BRAMAS

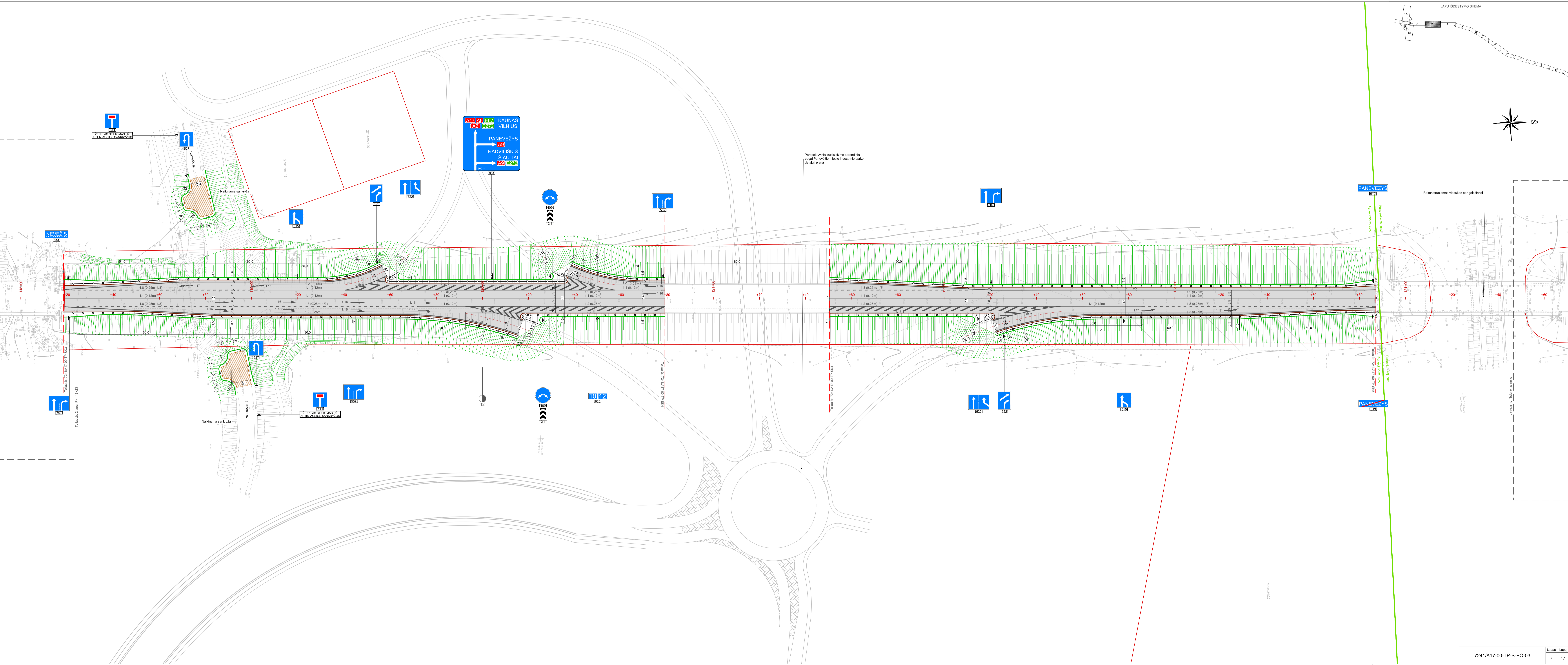
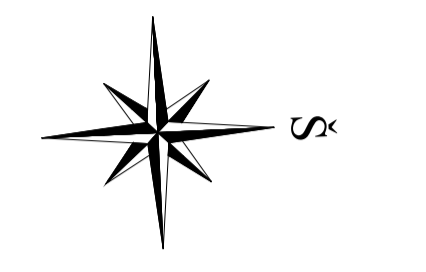
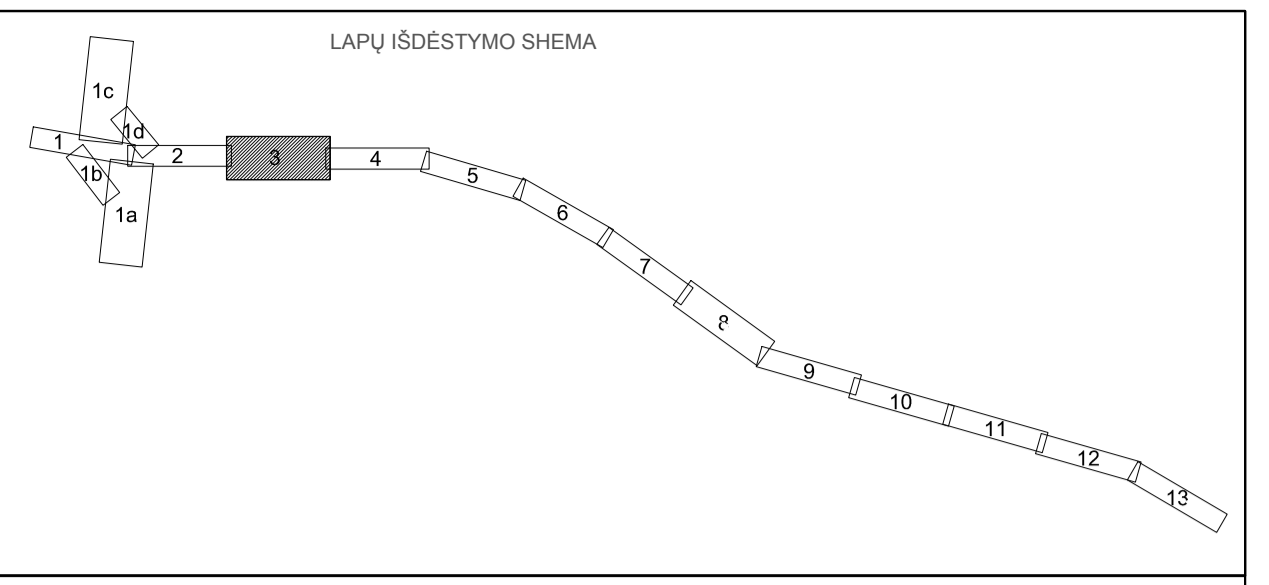
[E272] [E67] [A17]  
 SAMAS

[E272] [E67] [A17]  
 SAMAS



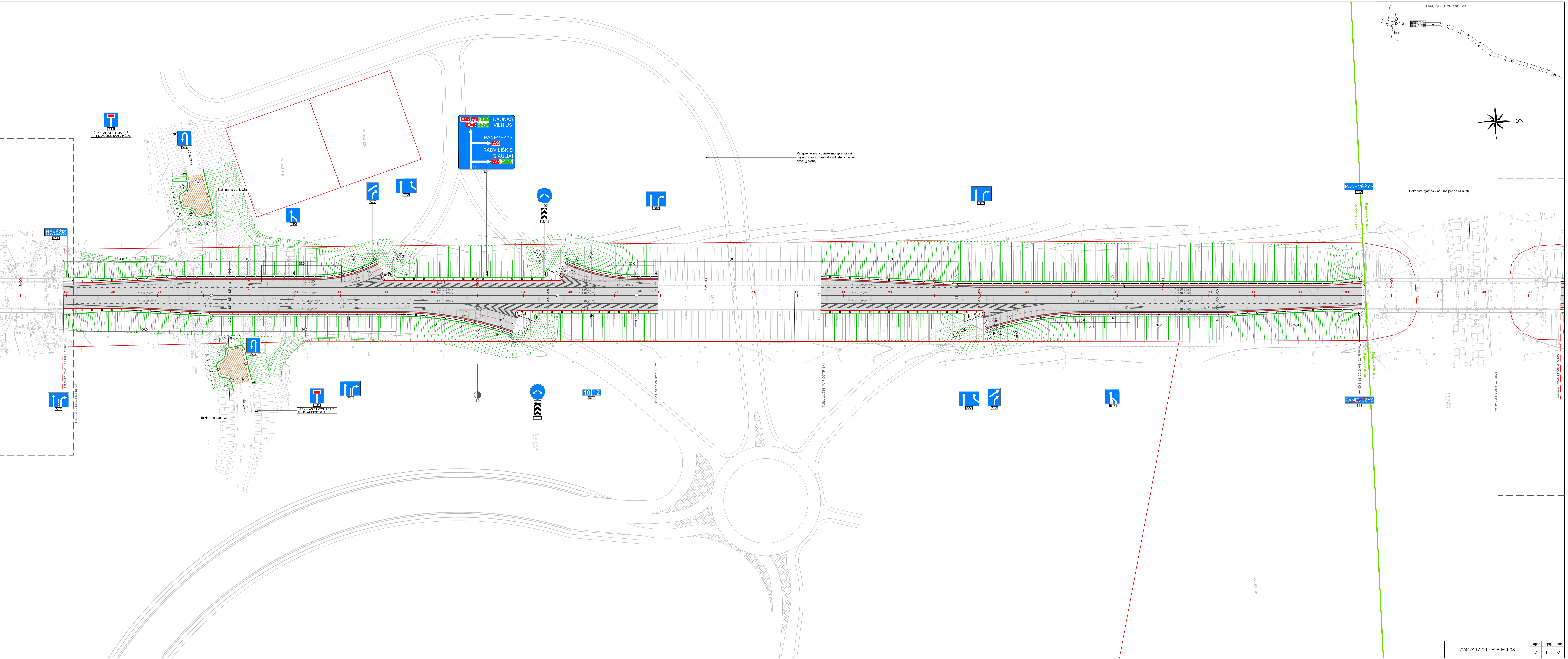
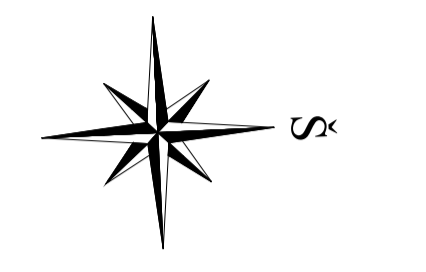
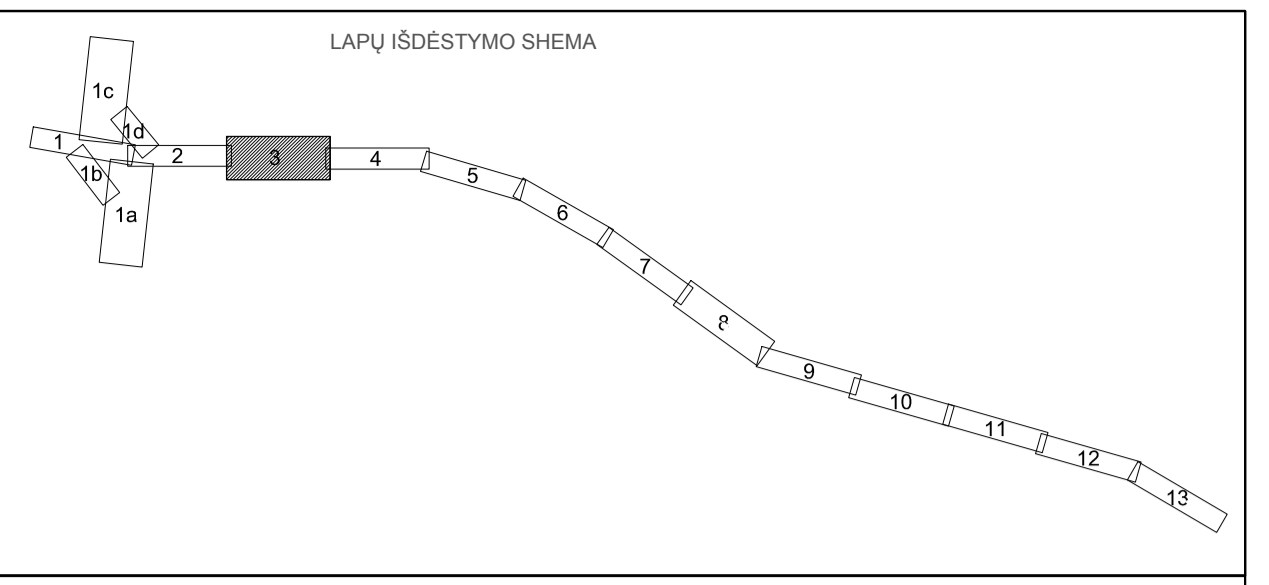






Perspektyviniai susisiekimo sprendiniai pagal Panevėžio miesto industrinio parko detalią planą

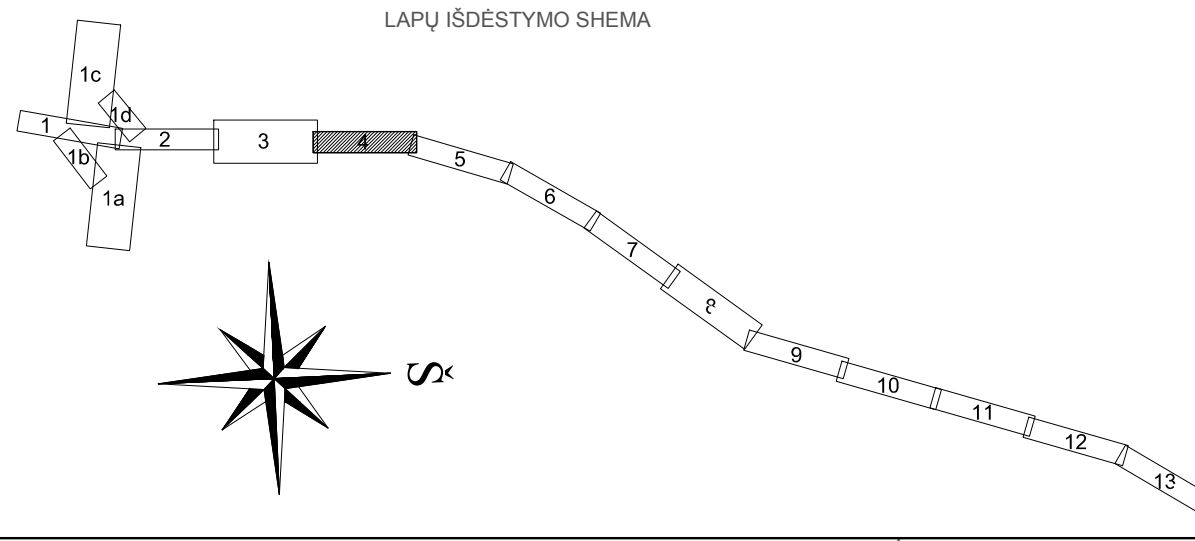
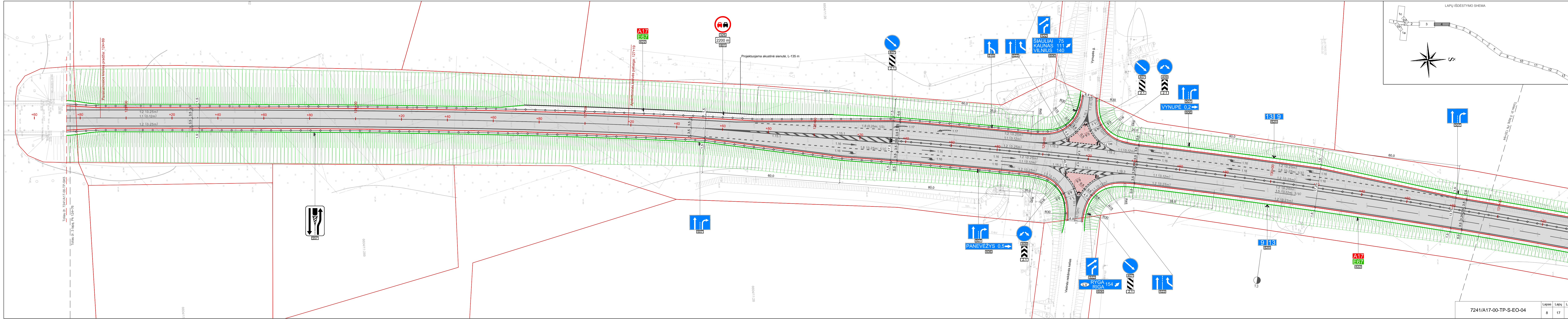
Rekonstruojamas viadukas per geležinkelį

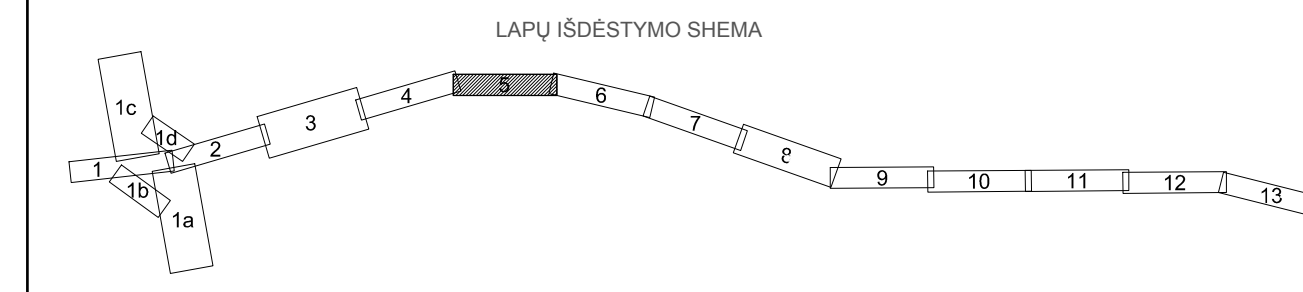
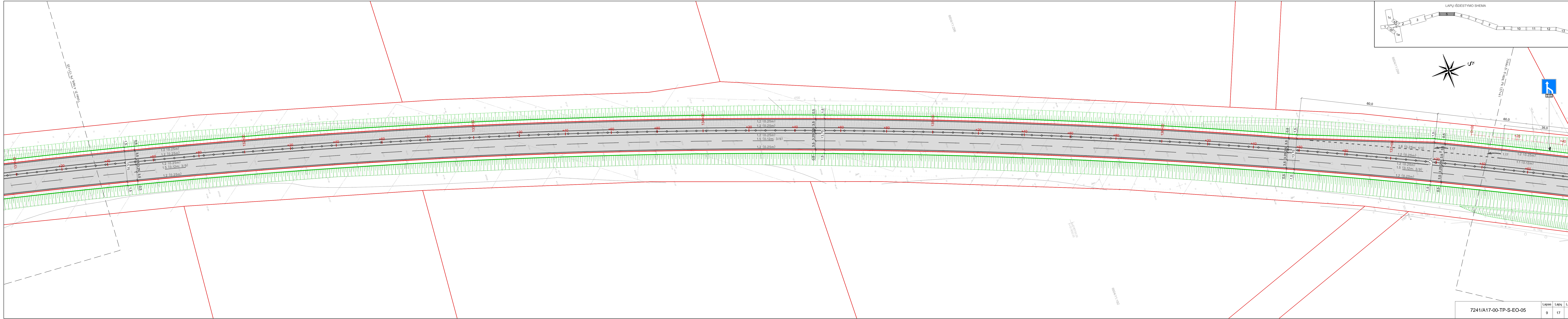


Perspektyviniai susisiekimo sprendiniai pagal Panevėžio miesto industrinio parko detalią planą

Rekonstruojamas viadukas per geležinkelį

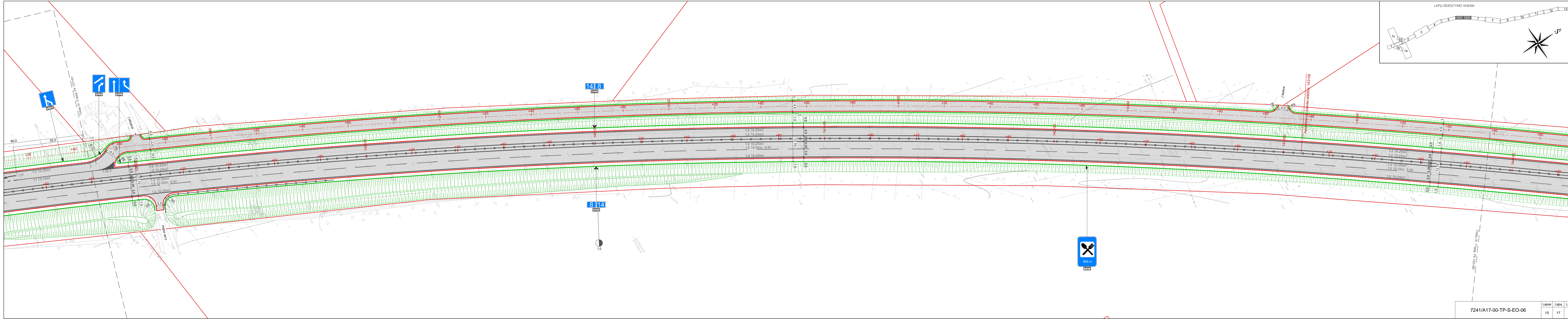




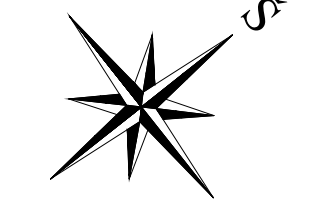
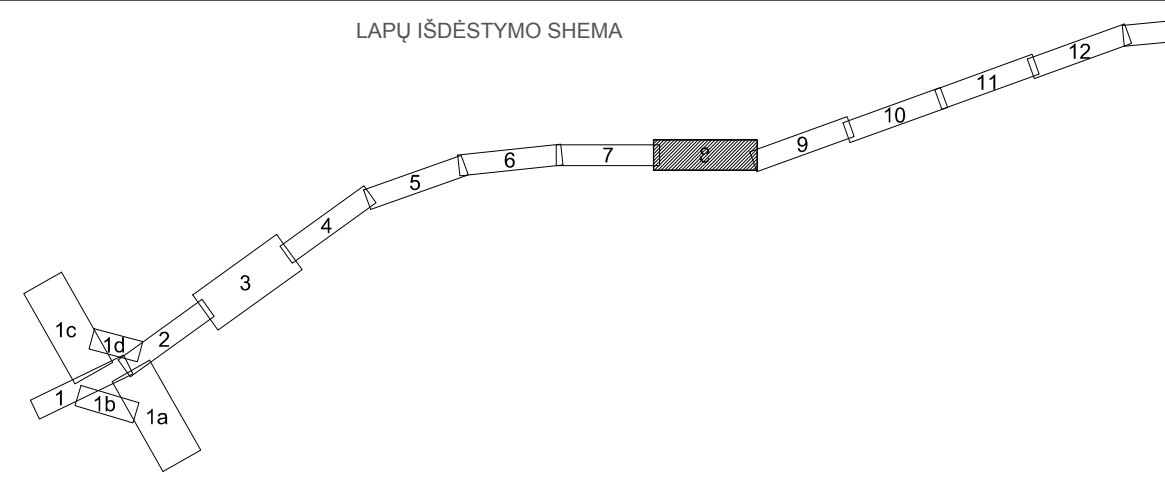
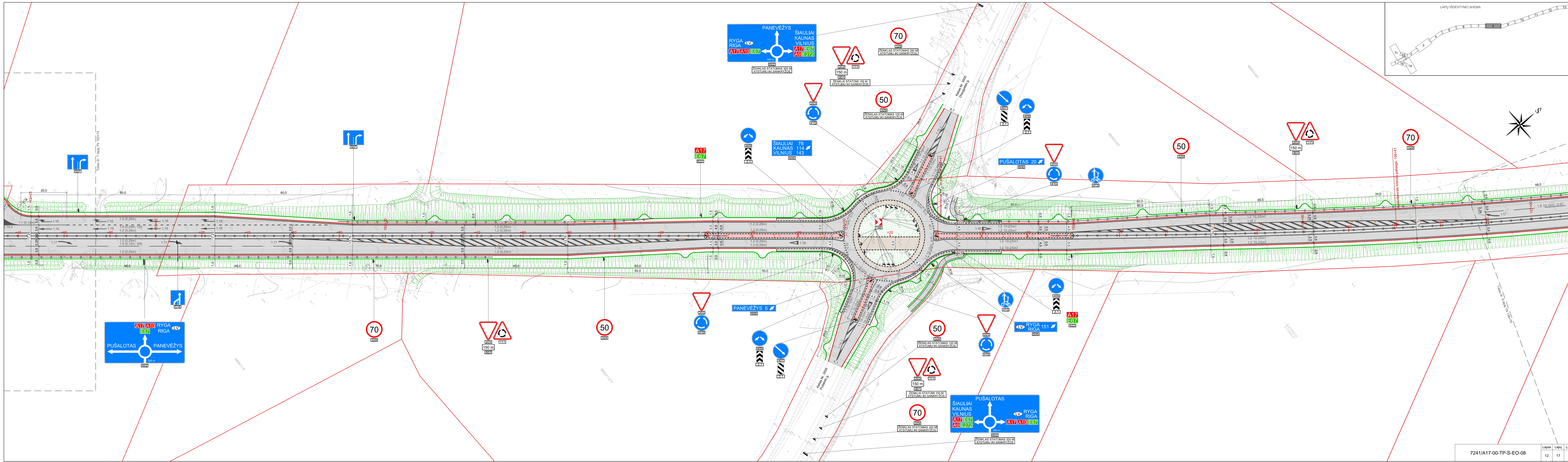


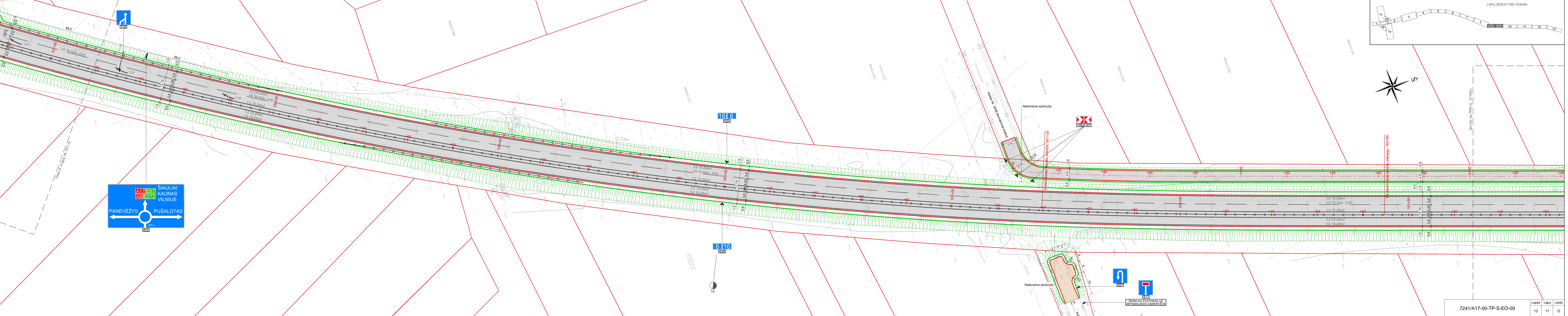
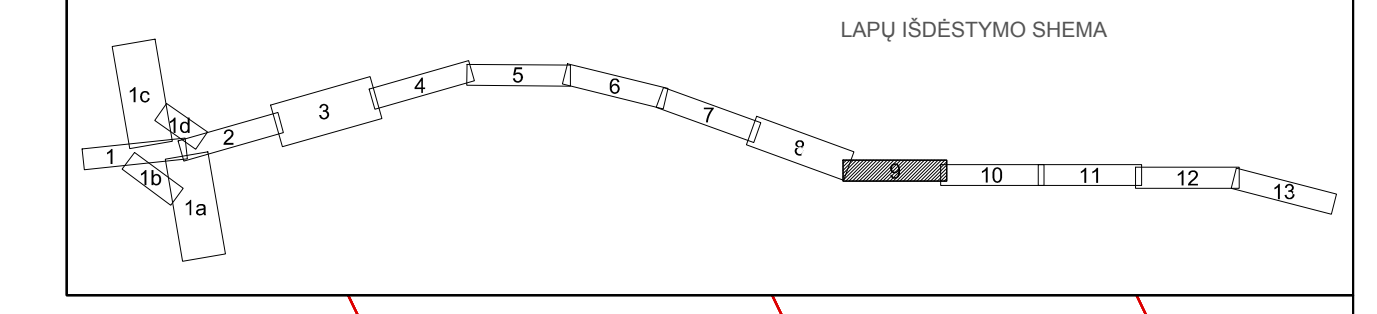
Lapas	Lapų	Laida
9	17	0

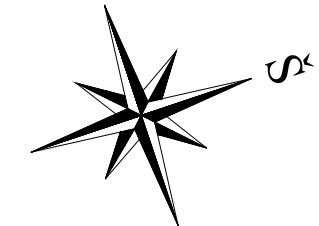
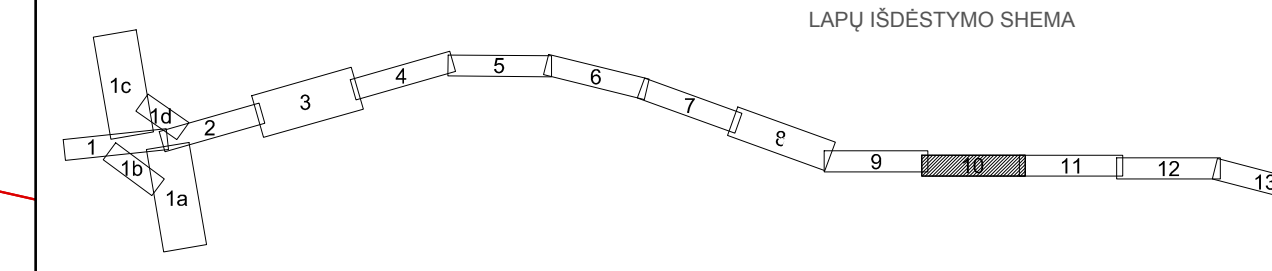
7241/A17-00-TP-S-EO-05











17 5  
1520

5 17  
1520

17

